

AW-CU570

IEEE 802.11 a/b/g/n/ac/ax + Bluetooth + 802.15.4 Microcontroller Module

Reference Design Guide

Rev. 01

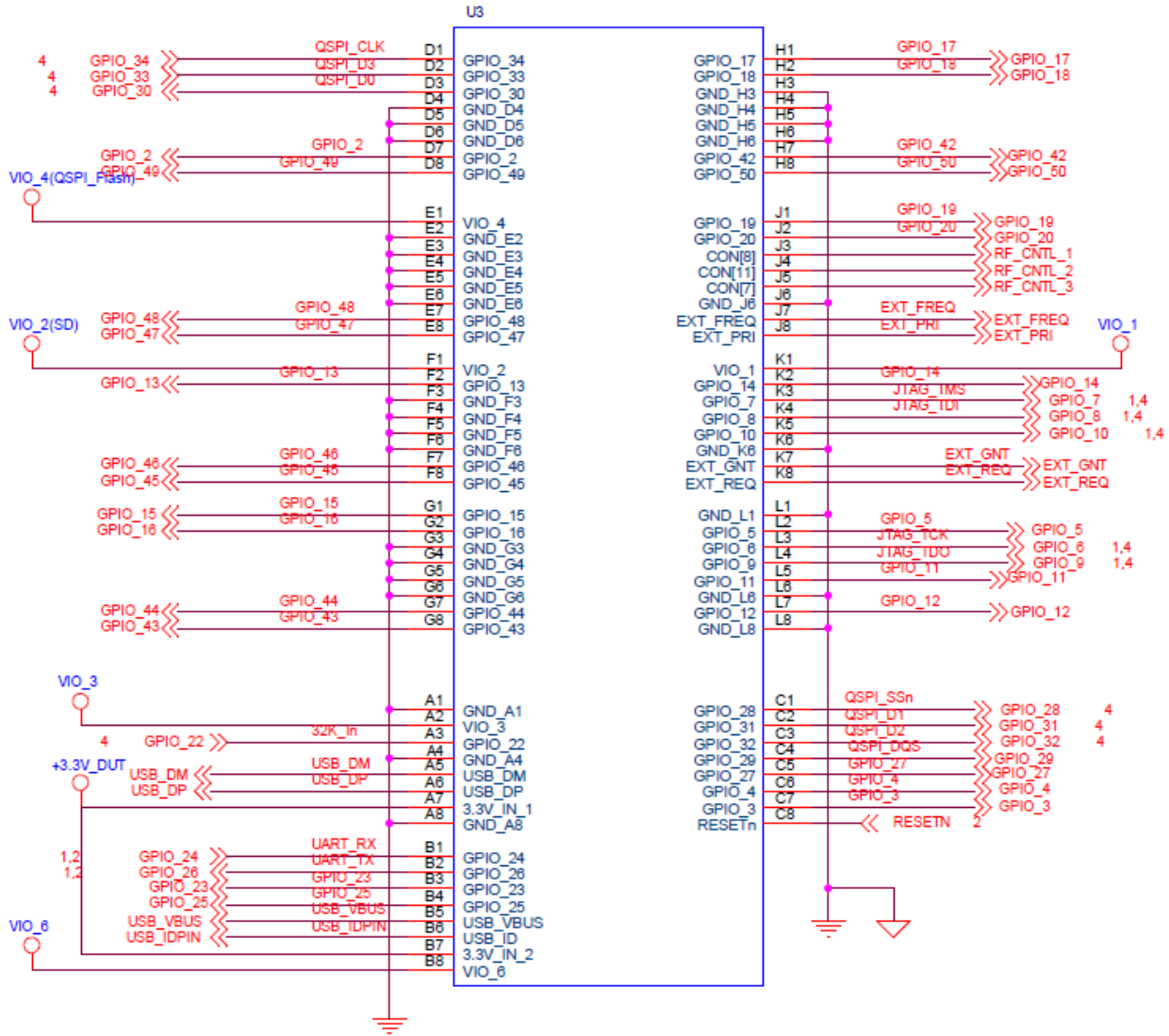
(For Standard)

Revision History

| Version | Revision Date | Description | Initials | Approved |
|---------|---------------|-------------------|-----------|----------|
| 01 | 2023/11/13 | ● Initial Version | Roger Liu | NC Chen |
| | | | | |

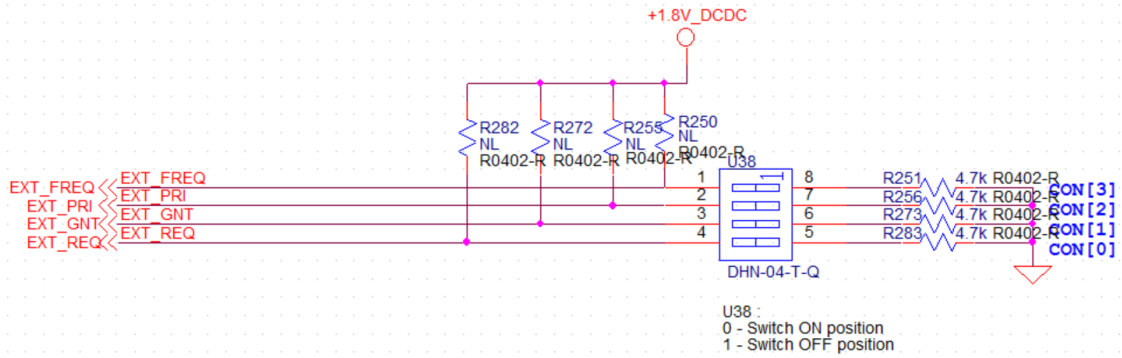
1. Module Pin Define

LGA MODULE PINOUT



AW-CU570

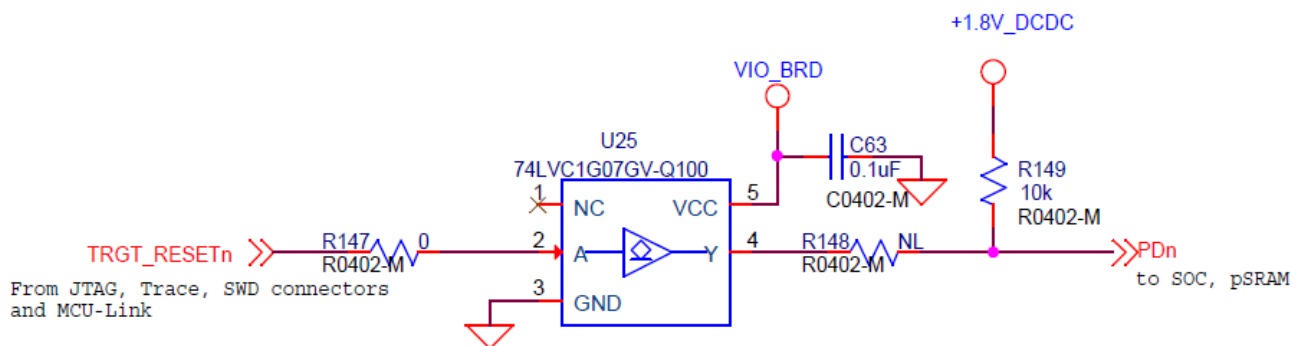
2. STRAP/CONFIG TABLE



| CON | FUNCTION | |
|-------|---|--------------------------------|
| [3:0] | CONFIG HOST BOOT[3:0] : EXT_FREQ, EXT_PRI, EXT_GNT, EXT_REQ | |
| | CON[3:0] Boot | |
| | 1111 | Boot from QSPI Flash (Default) |
| | 1110 | ISP boot (UART/I2C/SPI/USB) |
| | 1101 | Serial boot (UART/I2C/SPI/USB) |
| | 1100 | ISP boot (SDIO) |
| | 1011 | Serial boot (SDIO) |
| | 1010 | Reserved |

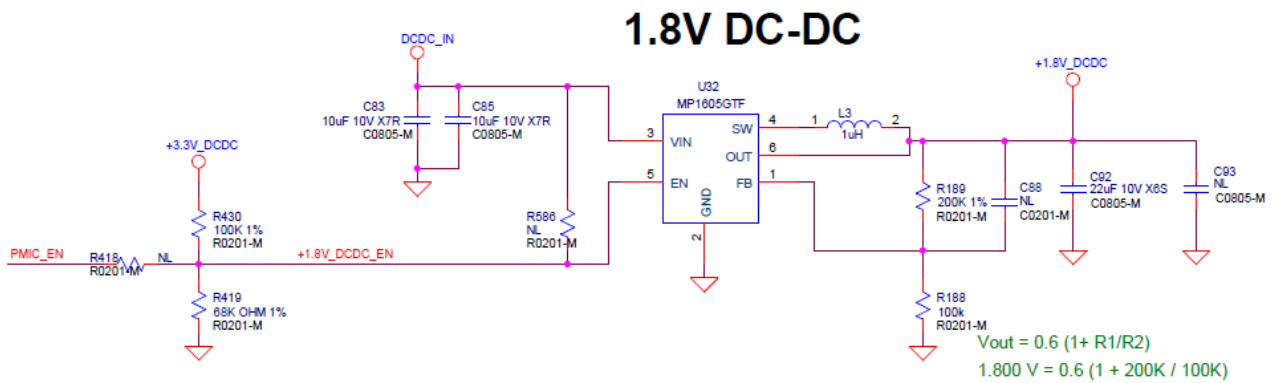
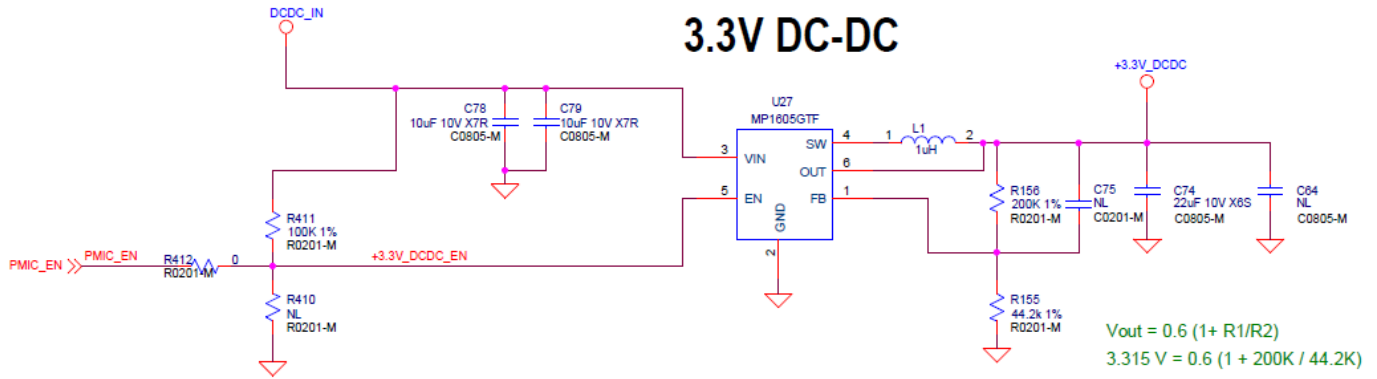
3. PDn pin pull high

*There is internal pull high 51K ohm to 3.3V in module.

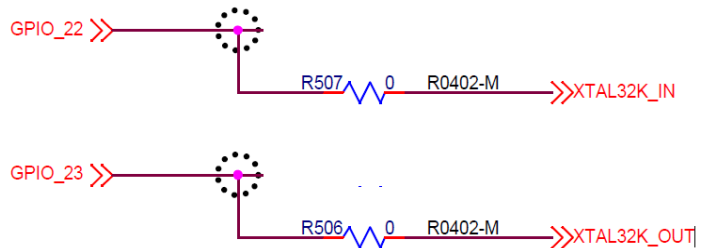
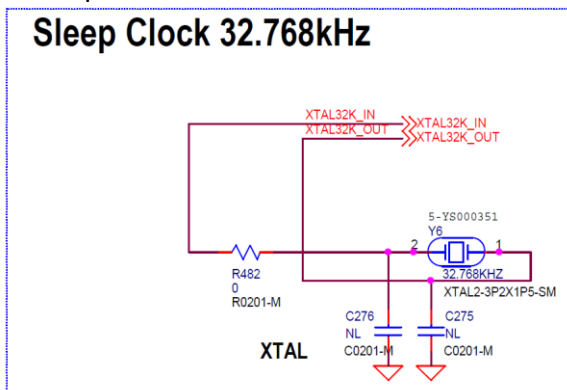


4. Power on sequence

Default Power Sequence :+5V -> +3.3V -> +1.8V



5. Sleep Clock



6. Memory

